



Technical specifications

# HSI Harness Functional

A lightweight three-point harness with adjustable chest, shoulder and thigh straps. The harness features a dorsal D-ring attachment on the back and two attachment loops on the chest for versatile connection options. This harness is characterized by the manual buckles where the user must create a latch using the two metal plates.

## Use

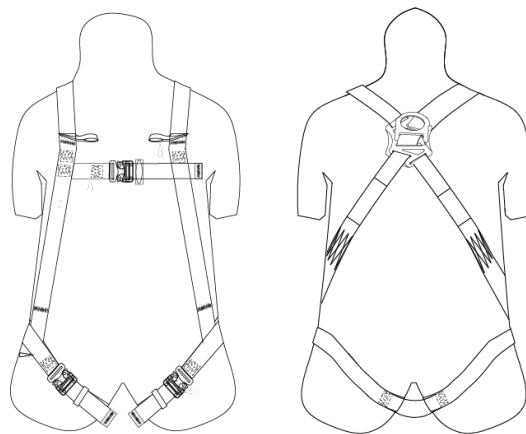
This fall protection harness is designed to distribute impact forces evenly across the body, it provides secure attachment points for fall arrest systems.

## Materials

<b>Harness:</b>	Polyester
<b>Buckles:</b>	Alloy steel

## Technical details

<b>Breaking strength:</b>	25 kN
<b>Capacity range:</b>	100 kg
<b>Dimensions:</b>	Width 44 mm
<b>Relevant standards:</b>	EN 361: 2002
<b>Packaging:</b>	Single unit box
<b>Color:</b>	Yellow/Black
<b>Ref.:</b>	VB01VI001



Technical specifications

# HSI Harness Functional